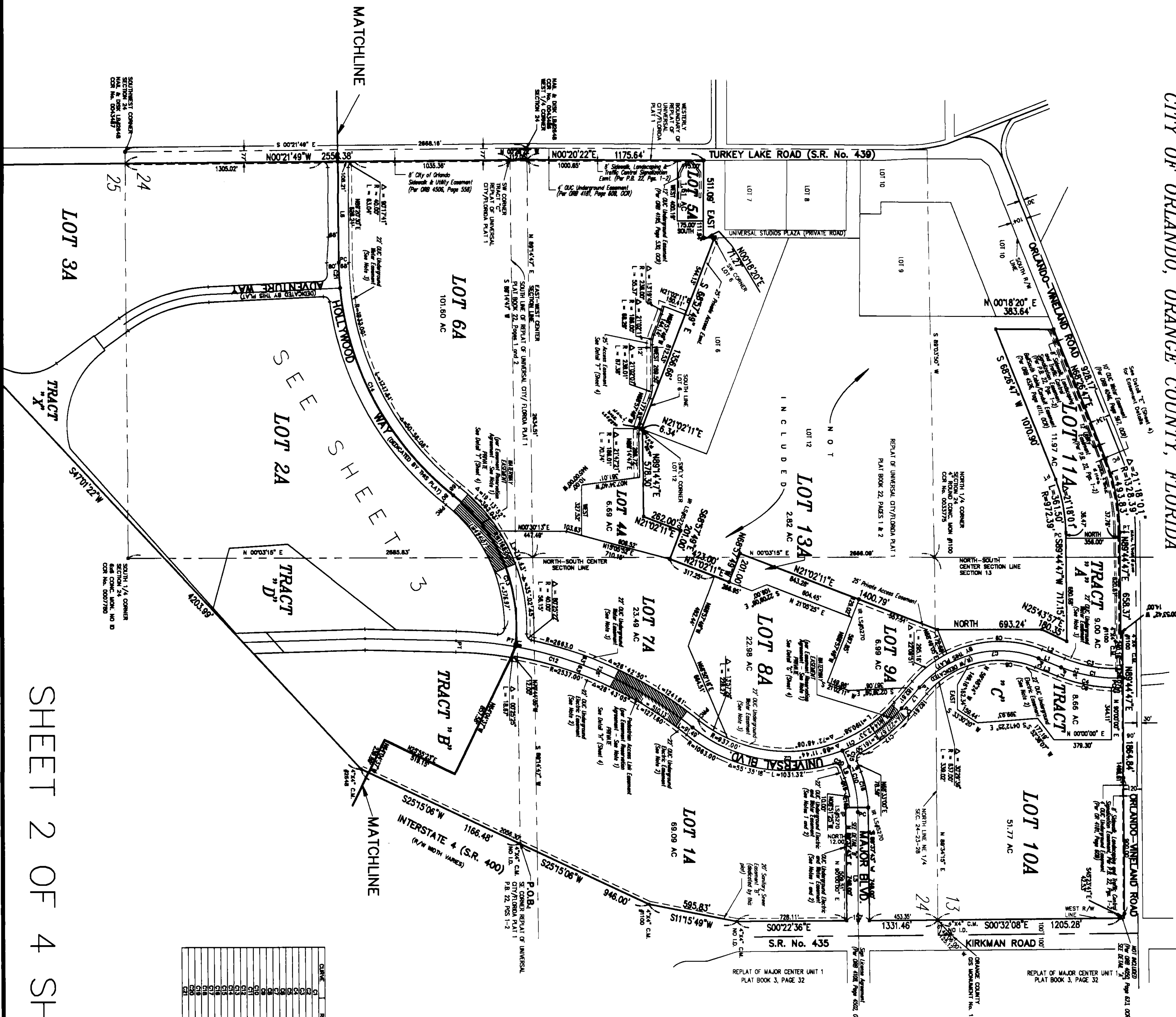
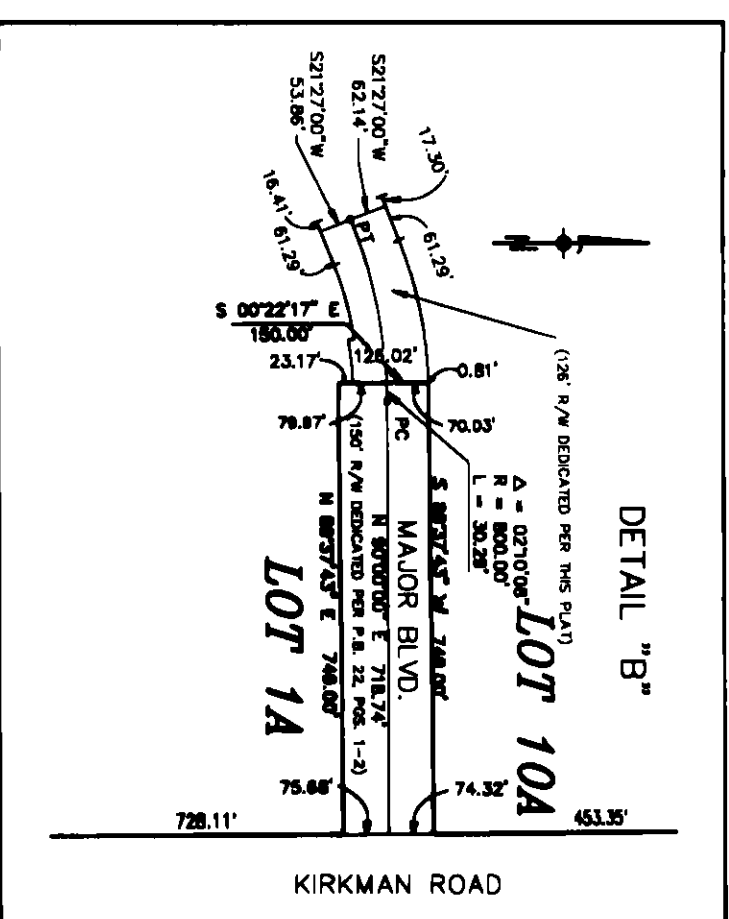
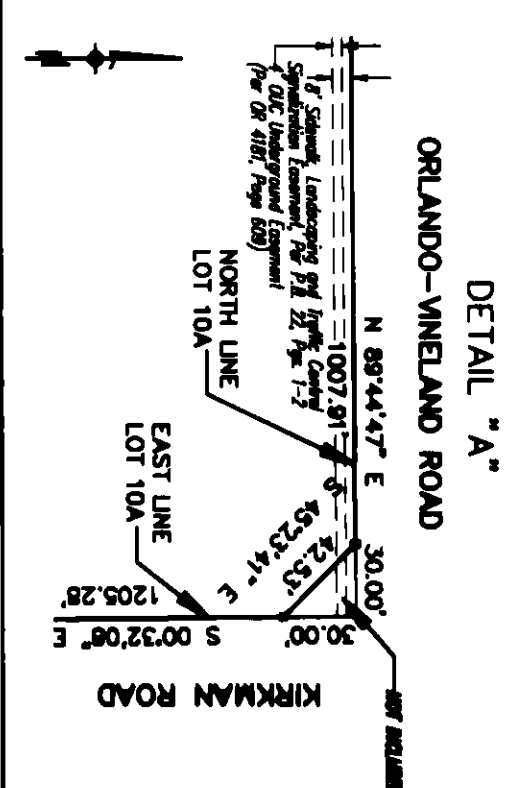


PLAT BOOK 35 PAGE 85

GRAPHIC SCALE



LINE	DIRECTION	DISTANCE
1	S 21°44.50' W	180.00
2	S 21°44.50' W	180.00
3	S 21°44.50' W	180.00
4	N 87°48.50' E	115.48
5	N 80°00.00' W	718.88
6	N 80°20.50' E	668.77
7	S 40°15.16' E	118.41
8	S 63°00.00' E	11.50
9	S 63°55.00' W	71.70

LINE TABL

[illegible]

CURVE TABI

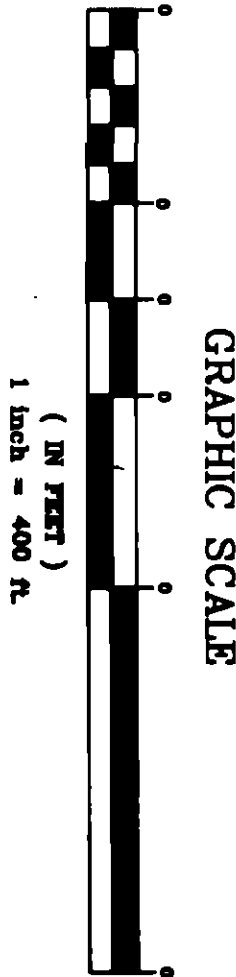
SHEET 2 OF 4 SHEETS

6418 Lakewood Road
Orlando, Florida 32835
phone (407) 886-8888
fax (407) 886-8336



Universal City Florida

A REPLAT OF A PORTION OF THE REPLAT OF UNIVERSAL CITY/FLORIDA PLAT 1
AND FLORIDA CENTER TOWN UNIT 9 AND A PORTION OF SECTIONS
13, 24, 25 & 26, TOWNSHIP 23 SOUTH, RANGE 28 EAST
CITY OF ORLANDO, ORANGE COUNTY, FLORIDA

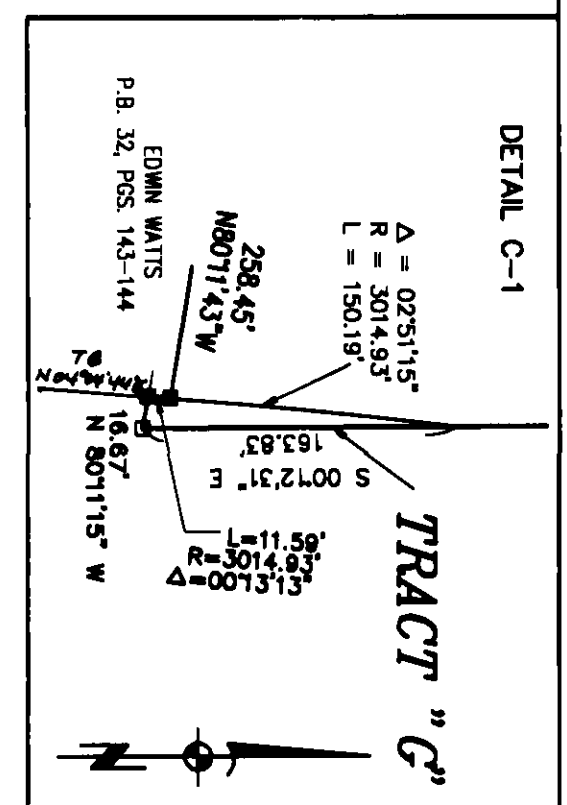
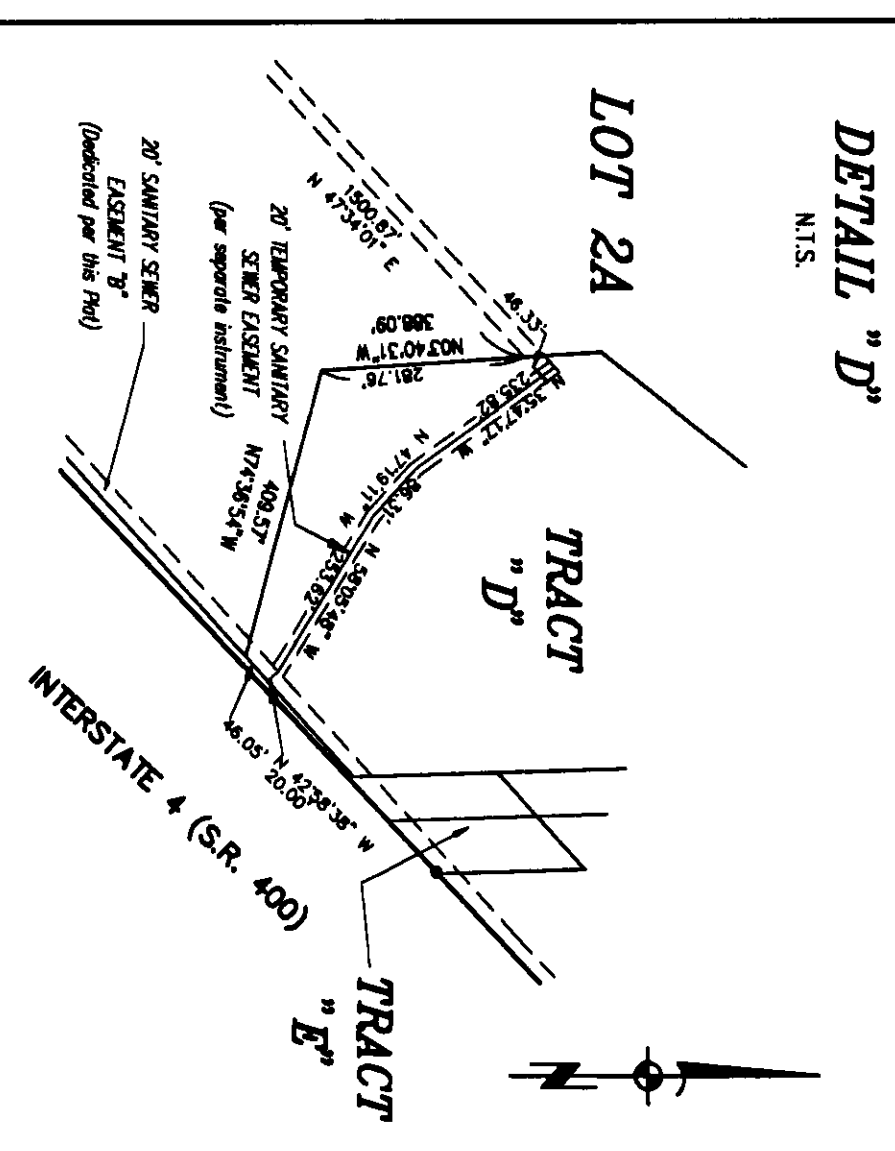
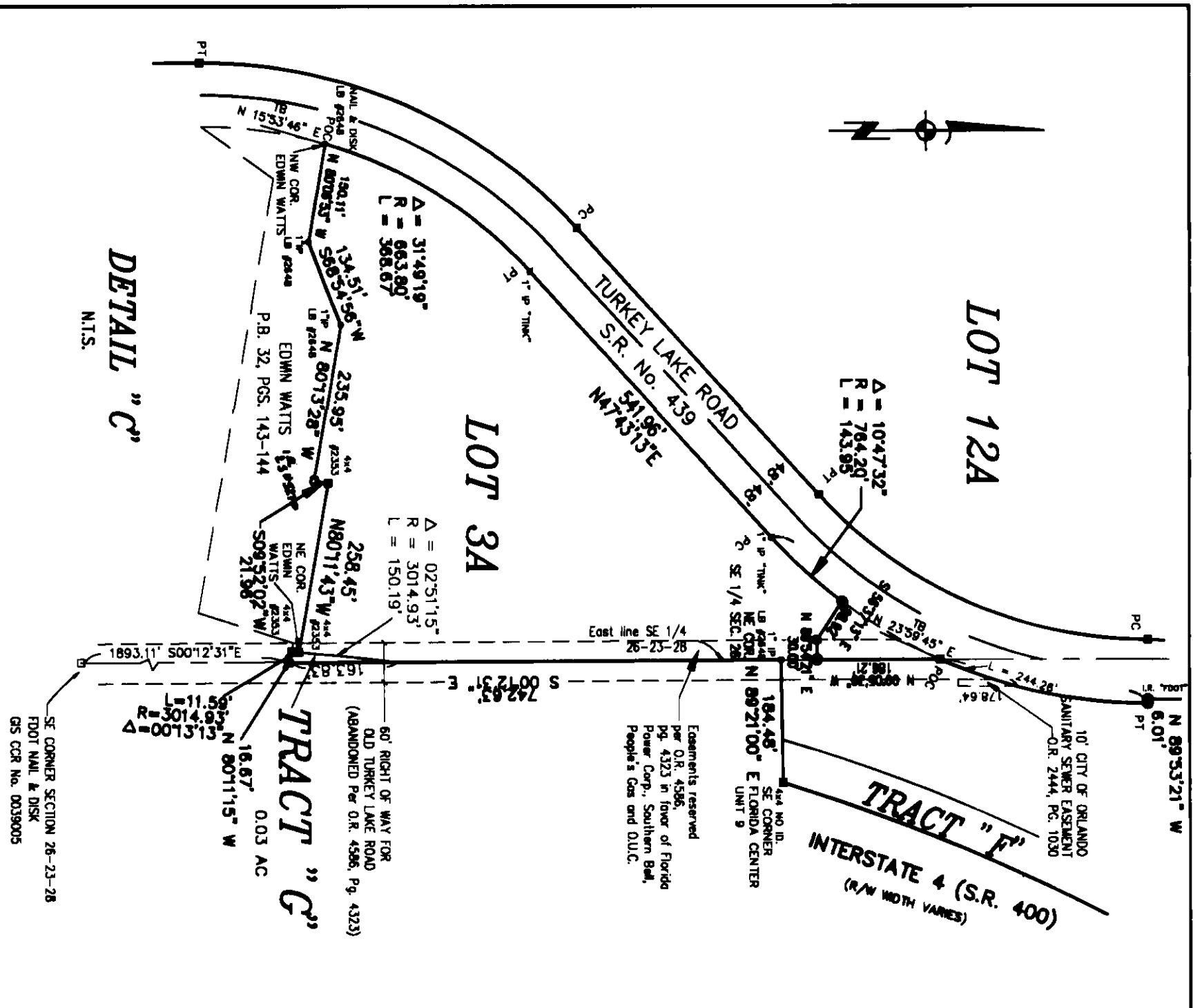
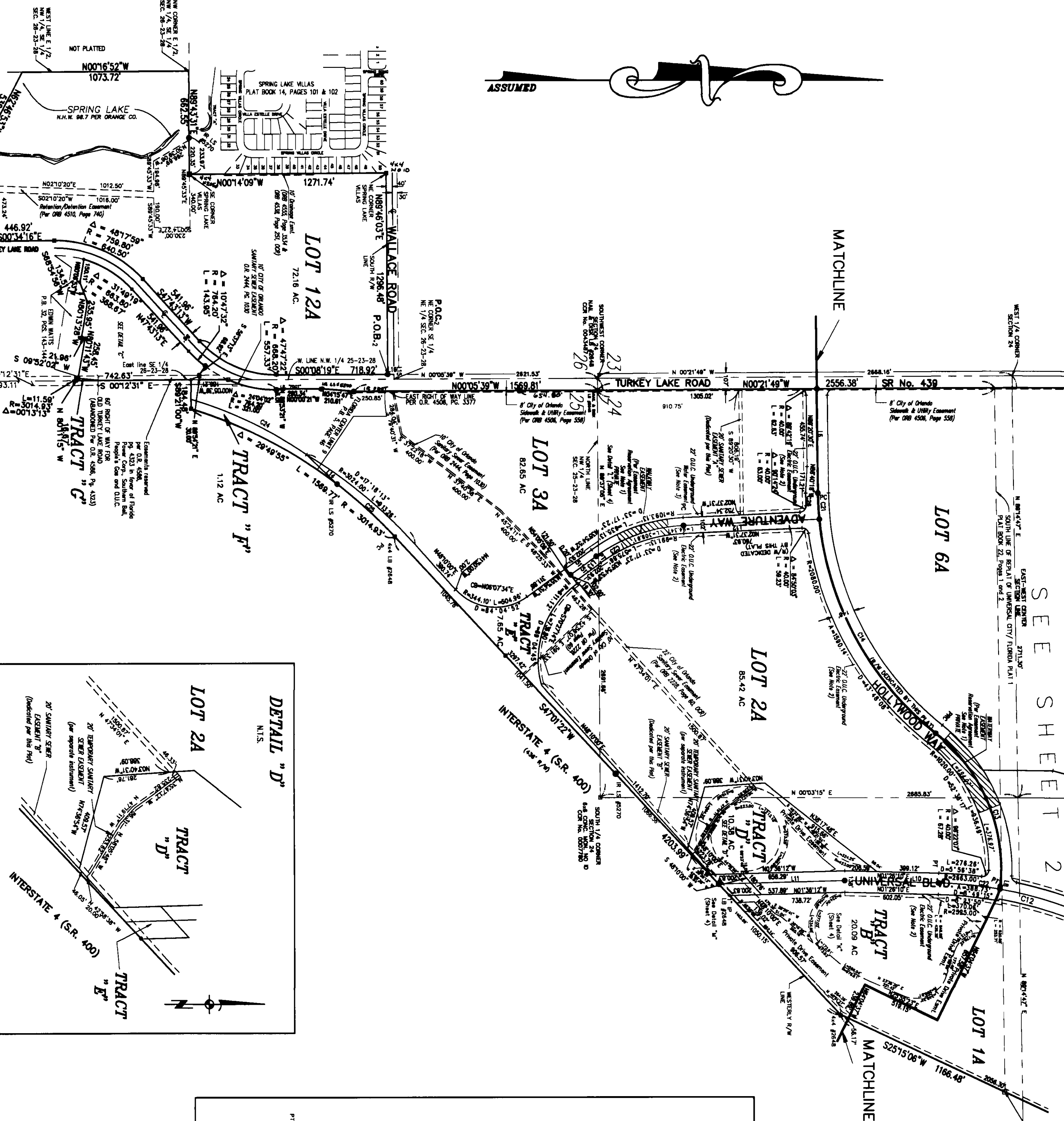


LINE TABLE

LINE	DIRECTION	DISTANCE
1A	N 89°07'00" E	17.36
1B	S 89°07'00" E	17.36
1C	N 89°07'00" E	17.36
1D	S 89°07'00" E	17.36
1E	N 89°07'00" E	17.36
1F	S 89°07'00" E	17.36
1G	N 89°07'00" E	17.36
1H	S 89°07'00" E	17.36
1I	N 89°07'00" E	17.36
1J	S 89°07'00" E	17.36

CURVE TABLE

CURVE	CH	NAME	LENGTH	TANGENT	CHORD	BEARING	CH. 1A
C1	1100.00	1100.00	1100.00	1100.00	1100.00	N 89°07'00" E	17.36
C2	1100.00	1100.00	1100.00	1100.00	1100.00	S 89°07'00" E	17.36
C3	1100.00	1100.00	1100.00	1100.00	1100.00	N 89°07'00" E	17.36
C4	1100.00	1100.00	1100.00	1100.00	1100.00	S 89°07'00" E	17.36
C5	1100.00	1100.00	1100.00	1100.00	1100.00	N 89°07'00" E	17.36
C6	1100.00	1100.00	1100.00	1100.00	1100.00	S 89°07'00" E	17.36
C7	1100.00	1100.00	1100.00	1100.00	1100.00	N 89°07'00" E	17.36
C8	1100.00	1100.00	1100.00	1100.00	1100.00	S 89°07'00" E	17.36
C9	1100.00	1100.00	1100.00	1100.00	1100.00	N 89°07'00" E	17.36
C10	1100.00	1100.00	1100.00	1100.00	1100.00	S 89°07'00" E	17.36



PLAT 35 PAGE 87

PLAT 35 PAGE 87

